

Supporting element made from high-resistance foam

Pecidur

For interior application and reconstruction

PCI®

Product Information

471

USES

- For interior and exterior application (for upstands and stairs).
- For floors, walls and soffits.
- For critical substrates.
- For later completion in wet areas (e.g. bathroom and kitchen).
- To be used for diverse layouts for interior and dry-technique application.
- For renovation and new buildings.
- Prefabricated angle elements for corners or to cover pipes and wires.

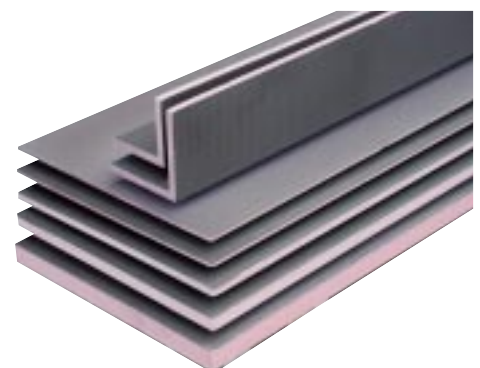
USER BENEFITS

- **The board and angle length** of 2.6 m corresponds to the German Building Regulation.
- **The element is coated with a special mortar containing glass fibre** enabling direct tiling or rendering/plastering.
- **The core is made of polystyrene foam (ozone-acceptable)** and corresponds to the building grade B1, DIN 4102 part 1.
- **Easy installation and application** by using customary dowels and tools (craftknife, hand saw or electric saw) and PCI materials.
- The **light weight** helps to make application easy and efficient.

SUBSTRATES

The following substrates are suitable:

- Screed, concrete, masonry, renders, and plasters
- Ceramic coverings
- Metal or wood-constructed walls
- Wooden flooring boards



TECHNICAL DATA

Material

Material basis	HCFC-free polystyrene foam with a two-sided special mortar coating
Compressive strain	>0.30 N/mm ²
Grade of heat conductivity (DIN 4108)	0.035 W
Diffusion resistance coefficient (DIN 52 615)*	80 - 300
Linear thermal expansion coefficient*	0.07 mm/mK
Water absorption (DIN 53 428)*	0.5 vol.-% (after 28 days of underwater storage)
Behaviour in fire (DIN 4102)*	low flammability (grade of building material B1)
Identification according to	
-Regulation for hazardous goods on roads	non hazardous
-Regulation for inflammable liquids	not applicable
-Regulation for hazardous substances	not subject to identification
Storage	cool and dry, in flat position
Shelf life	non-rotting
Temperature resistance	-20°C to +80°C

*refers to the polystyrene foam core

Packaging PCI-Pecidur boards

Description	Thickness mm	Board size mm	Quantity/Pallet and Total m ²	Article No./EAN Code
PCI-Pecidur 6	6	1300 x 600	140 boards x 0.78 m ² =	109.20 m ² 1668/8
PCI-Pecidur 10	10	2600 x 600	50 boards x 1.56 m ² =	78.0 m ² 1669/5
PCI-Pecidur 10 K	10	1300 x 600	100 boards x 0.78 m ² =	78.0 m ² 1742/5
PCI-Pecidur 20	20	2600 x 600	50 boards x 1.56 m ² =	78.0 m ² 1672/5
PCI-Pecidur 30	30	2600 x 600	36 boards x 1.56 m ² =	56.16 m ² 1673/2
PCI-Pecidur 40	40	2600 x 600	36 boards x 1.56 m ² =	56.16 m ² 1674/9
PCI-Pecidur 50	50	2600 x 600	26 boards x 1.56 m ² =	40.56 m ² 1676/3

Packaging PCI-Pecidur W angle elements

Description	Size mm	Thickness mm	Length mm	Quantity/Pallet	Article No./EAN Code
PCI-Pecidur W 150	150 x 150	20	2600	60	1681/7
PCI-Pecidur W 200	200 x 200	20	2600	40	1686/2
PCI-Pecidur W 300	300 x 300	20	2600	40	1693/0
PCI-Pecidur W 400	400 x 200	20	2600	40	1694/7

Packaging PCI-Pecidur W tub elements

Description	Thickness mm	Size mm	Quantity/Pallet	Article No./EAN Code
PCI-Pecidur tub element K	30	730 x 600	30 boards	3432/3
PCI-Pecidur tub element L	30	1770 x 600	30 boards	3433/0

Packaging PCI-Pecidur washer

Description	Washer	Quantity/Box	Article No./EAN Code
PCI-Pecidur Washer 60 K	60 mm, plastic	500	1707/4
PCI-Pecidur Washer 50 M	50 mm, steel, galvanised	500	1708/1
PCI-Pecidur Washer 76 M	76 mm, steel, galvanised	500	1709/8

Packaging PCI-Pecidur metal dowels

Description	Washer	Length	Quantity/Box	Article No./EAN Code
PCI-Pecidur Metal Dowel 80	35 mm	80 mm	250	1732/6
PCI-Pecidur Metal Dowel 110	35 mm	110 mm	250	1733/3
PCI-Pecidur Metal Dowel 140	35 mm	140 mm	250	1735/7

APPLICATION

The PCI-Pecidur supporting elements made of high-resistance foam can be cut and/or shaped with a craftknife, hand saw or electric saw.

1 Installation on metal and wood-constructed walls

1.1 Cut PCI-Pecidur boards to length.

1.2 Cut recesses for possible connections.

1.3 For installation on wood-constructed walls mount the PCI-Pecidur boards using chip board screws (screw length = thickness of board + 20 mm) and washers. For installation on metal constructed walls, the PCI-Pecidur boards are mounted with self-tapping metal screws and washers.

1.4 In bathrooms and showers (load grade I or II) the butt joints and pipe openings must be waterproofed with PCI-Waterproofing Tape and/or PCI Waterproofing Gasket and PCI-Lastogum or PCI-Seccoral.

2 Installation on walls

The PCI-Pecidur board, 6 mm thick, can be used to produce smooth areas, e.g. walls which are partially tiled. The tile adhesive Tilefast 6 Rapid Flex is applied with a trowel, notch size 6 to 8 mm, the PCI-Pecidur boards are installed and fastened with dowels after curing of the adhesive (5 dowels/m²).

2.1 Cut the PCI-Pecidur boards to length and drill 5 holes per m² for the dowels (8 holes/board). Cut recesses for possible connections.

2.2 Apply a lump of mortar, e.g. Tilefast 6 Rapid Flex or PCI-Muroplan, as required depending on the wall, according to the hole markings.

2.3 Support the PCI-Pecidur boards on the floor, press down and vertically align.

2.4 After the mortar has cured drill the holes for the dowels according to the markings (8 mm, depth into the loadable substrate (50 mm) and fix with metal dowels.

2.5 In bathrooms and showers (load grade I or II) the butt joints and pipe openings must be waterproofed with PCI-Waterproofing Tape and/or PCI-Waterproofing Gasket and PCI-Lastogum or PCI-Seccoral.

3 Installation on the floor

3.1.1 Screw wooden flooring boards together, if required, and prime with Primer W. Allow the primer to dry.

3.1.2 Prepare cement screeds, anhydrite screeds, old ceramic coverings in accordance with the latest technique.

3.1.3 Cut PCI-Pecidur boards to length.

3.3 Apply Tilefast 6 Rapid Flex (adhesive bed thickness = 5 mm) or PCI-Polyflott flex (adhesive bed thickness = 10 mm) and install the PCI-Pecidur boards within the open time.

PLEASE NOTE

- The PCI-Pecidur supporting elements are made of high-resistance foam and angle elements can be cut with a craftknife, hand saw or electric saw.
- For the application in the dot and dab method the PCI thin-bed mortars such as Tilefast 20 Rapid or the gypsum-based levelling compound PCI-Muroplan can be used. The butt joints can be glued with PCI-Egacoll or PCI-Kraftkleber.
- Store in flat position in cool and dry areas.
- The regulations of the ZDB Note “Notes for the interior and exterior application of tile and board coverings laid directly on waterproofings”, edition August 2000, are to be followed for the installation of PCI-Pecidur in bathrooms and showers (load grade I or II).
- Floor coverings installed on PCI-Pecidur cause a hollow sound.

For further information refer to the PCI Material, Safety Data Sheet.

PCI®

PCI Construction Systems Ltd

Albany House, Swinton Hall Road,
Manchester, M27 4DT, England.

Tel: 0161 794 7411

E-mail: pciconstruction@compuserve.com

Website: pci.uk.com

Help-line: 0845 458 9105 Tech-fax: 0845 458 9106

(0845 calls charged at lo rate)

For International Uses this product is known as
PCI (Pecidur), PCI can be contacted at the following location:-

PCI Augsburg GmbH

Piccardstraße 11, 86159 Augsburg, Postfach 102247, 86012 Augsburg.
Telefon 08 21/59 01-0, Fax 08 21/59 01-372, www.pci-augsburg.de

In view of widely varying site conditions this data sheet is meant to provide general application guidelines only. Any recommendation or information issued by us constitutes a preliminary and accessory contractual obligation only. Users must satisfy themselves regarding the applicability of the content to their own particular requirements. Please contact our Advisory Service for special requirements. Liability is accepted for incomplete or incorrect particulars in our information material only in the event of intent or gross negligence, without prejudice to claims under product liability laws. All transactions are subject to our Terms of Sale and Supply. Any subsequent publication supersedes this edition. Edition April 2003.



Member of degussa Group